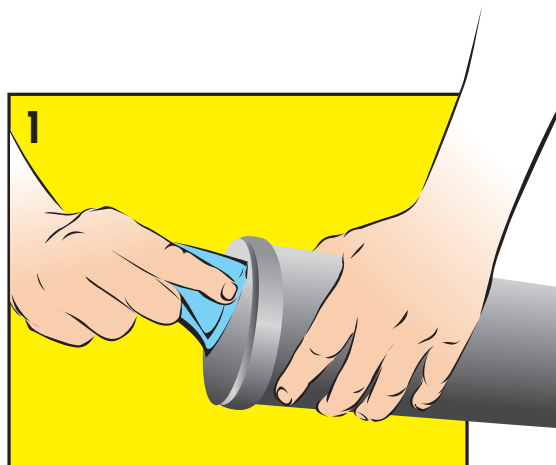


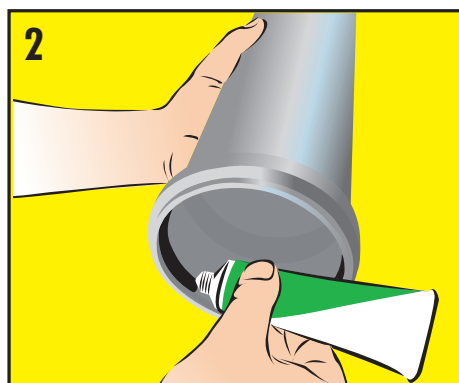
Instruction for SUPER GLIDEX

Instruktion for use:

1. Make sure that the rubber packing is placed in the right position in the milled groove, and that the tube-end entering the socket pipe is deburred. Clean both pipe-end and packing to make sure that they are free off dirt and gravel.



2. Add an appropriate amount of SUPER GLIDEX to the rubber-packing.



3. Press/wriggle the pipe-end into position in the muff. Be careful not to push the rubber-packing out of the milled groove.

